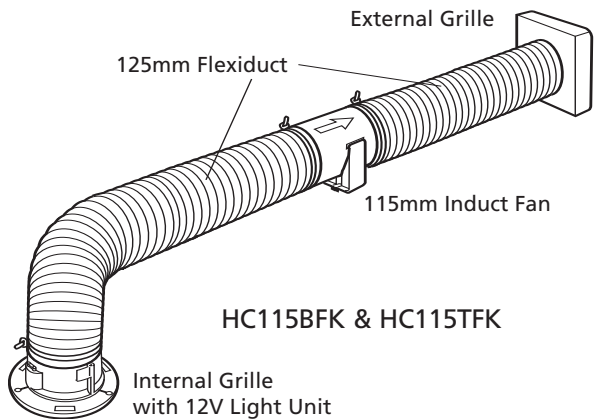


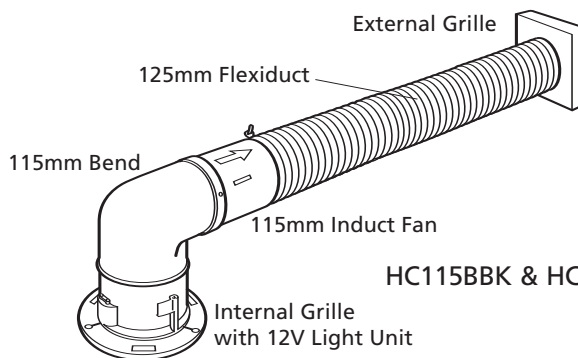
Airvac Elite Halo Shower Fan & Light Installation Instructions

Read all instructions before commencing installations

HC115BFK, HC115TFK, HC115BBK, HC115TBK

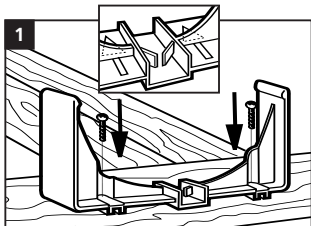


HC115BFK & HC115TFK

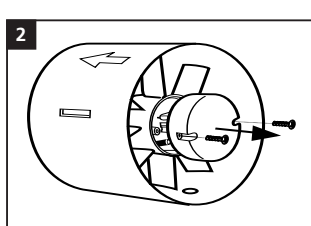


HC115BBK & HC115TBK

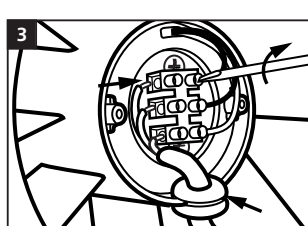
HC115BFK & HC115TFK



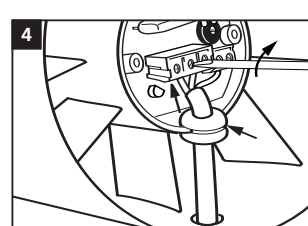
1 Secure fan holder to a joist using two No. 6 screws.



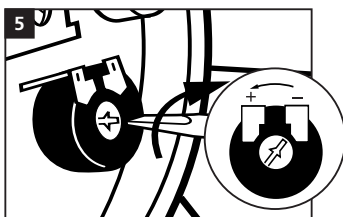
2 To wire the induct fan, first remove the wiring cover.



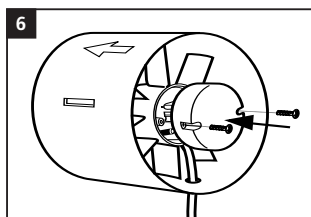
3 For the basic fan, wire up the fan according to the diagrams on back page.



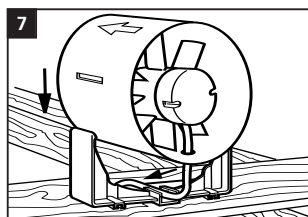
4 For the timer option, wire up the fan according to the diagrams on back page.



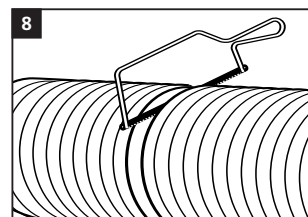
5 Adjust timer. The timer is adjustable between 1 & 25 minutes. It is factory set at midpoint.



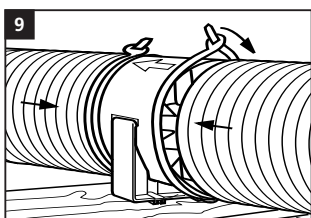
6 Secure the cover back onto the fan.



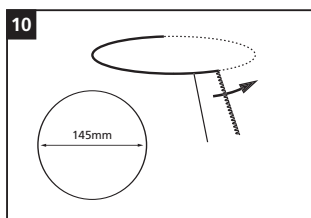
7 Clip fan into fan holder making sure it is secure.



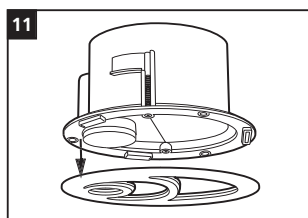
8 Cut the flexiduct to the lengths required.



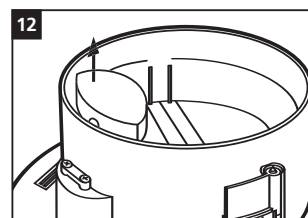
9 Secure ducting to the fan using the ties provided.



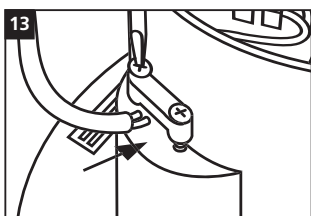
10 Cut a hole in the ceiling of the room where the Elite light unit is to be fitted and thread through the wiring for the Elite light unit.



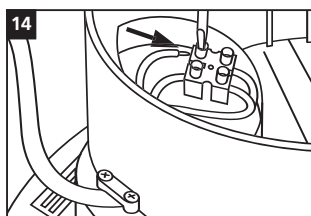
11 Unclip internal grille from Elite light unit.



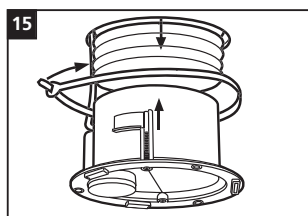
12 To wire the Elite light unit, first remove the wiring cover.



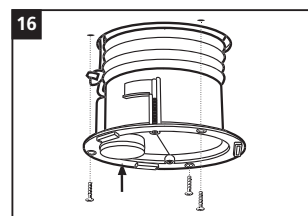
13 Loosen the securing clamp on the side of the unit and thread the transformer's leads through the hole and resecure clamp.



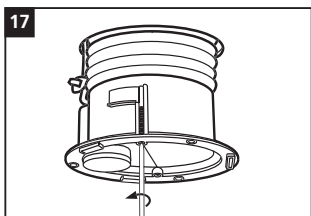
14 Wire the unit according to basic or timer diagram on back page. Replace wiring cover.



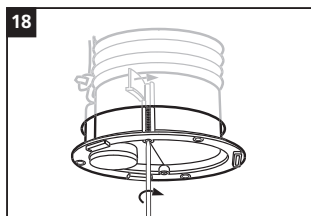
15 Push one end of the flexiduct through the ceiling and attach it to the Elite light unit using one of the ties provided.



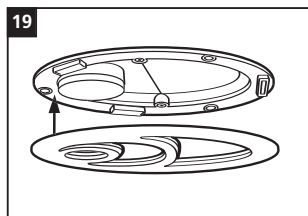
16 Mark and plug three holes using the three fixing holes on the Elite light unit. Secure by using three No 6 countersunk screws.



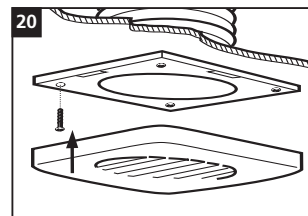
17 Alternatively use the fixing fingers on the unit. These are used by first slightly unscrewing the two long screws provided so that the fixing fingers are loose.



18 Twist the fixing fingers around so that they stick outwards. Then tighten them against the ceiling (do not overtighten). To fit lamp - see back page.

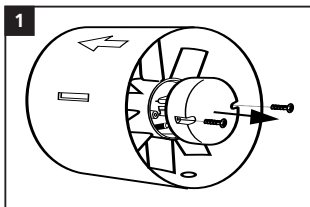


19 Replace internal grille onto Elite light unit body.

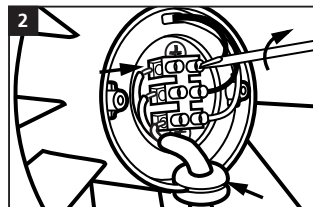


20 Prepare suitable hole through soffit and fix grille back plate using plugs and screws provided. Snap on external grille.

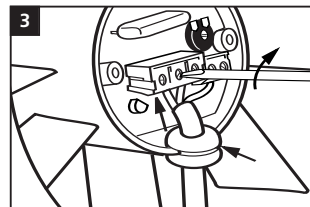
HC115BBK & HC115TBK



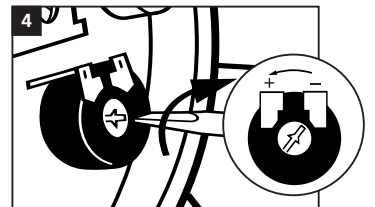
To wire the induct fan, first remove the wiring cover.



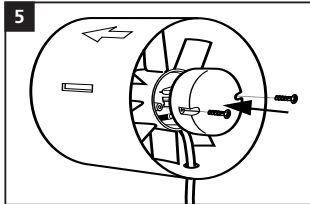
For the basic fan, wire up the fan according to the diagrams on back page.



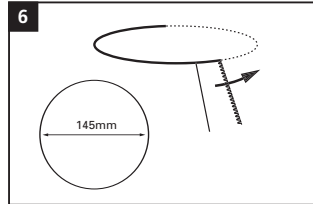
For the timer option, wire up the fan according to the diagrams on back page.



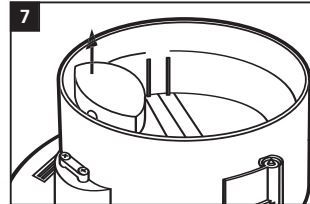
Adjust timer. The timer is adjustable between 1 & 25 minutes. It is factory set at midpoint.



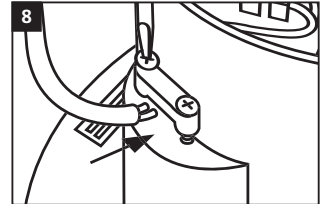
Secure the cover back onto the fan.



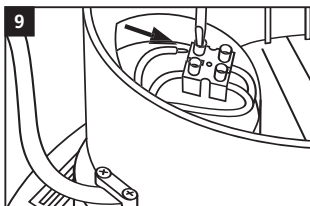
Cut a hole in the ceiling of the room where the Elite light unit is to be fitted and thread through the wiring from the transformer.



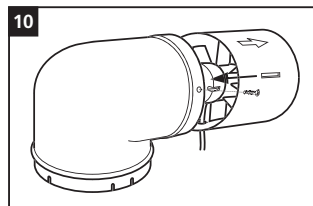
To wire the Elite light unit, first remove the wiring cover.



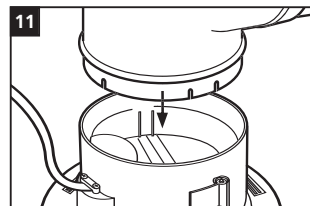
Loosen the securing clamp on the side of the unit and thread the transformer's leads through the hole and resecure clamp.



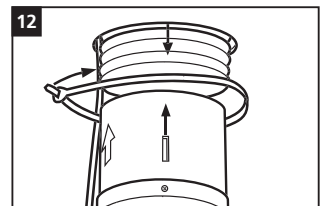
Wire the unit according to diagram below. Replace wiring cover.



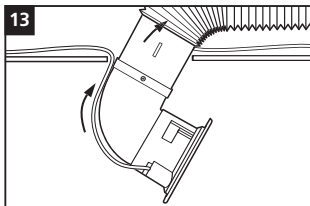
Secure induct fan to 90° bend using the self tapping screws provided (use a 2.5mm drill bit).



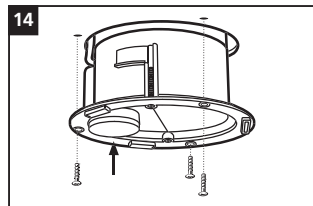
Push one end of the 90° bend onto the Elite light unit and click fit.



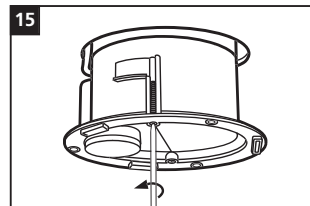
Push one end of the flexduct through the ceiling and attach it to the fan using one of the ties provided.



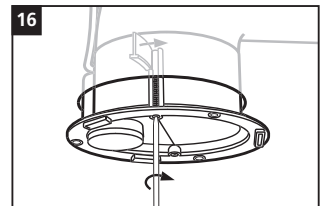
Push the attached fan and 90° bend up through the hole. Make sure the wiring is not impeded. Unclip internal grille.



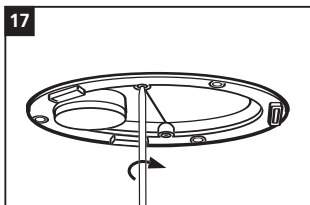
Mark and plug three holes using the three fixing holes on the Elite light unit. Secure by using three No. 6 countersunk screws.



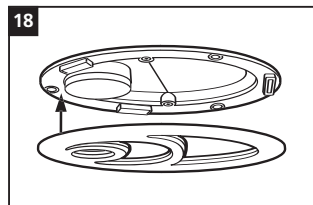
Alternatively use the fixing fingers on the unit. First slightly unscrew the two long screws so that the fixing fingers are loose.



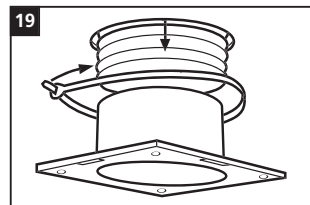
Push Elite light unit through the hole in the ceiling and twist the fixing fingers around so that they stick outwards.



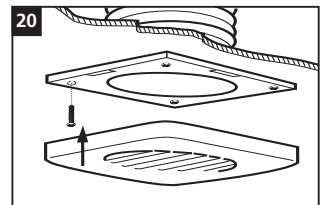
Then tighten the fixing fingers against the ceiling (do not overtighten). To fit lamp – see below.



Replace internal grille onto Elite light unit body.



Prepare suitable hole through wall or soffit. Push through the unattached end of the flexduct and attach it to the grille back plate using one of the ties provided.



Fix grille back plate using plugs and screws provided. Snap on external grille.

Notes:

If the unit is installed in a room containing a fuel burning appliance of a non-balanced flue design, it is the responsibility of the installer to ensure that sufficient replacement air is provided to prevent products of combustion from being drawn down the flue when the light/fan unit is operating.

The units should not be sited where it would be subject to a direct source of heat in excess of 40°C.

Once fitted into ceiling void or loft space do not cover light body, fan or transformer with any insulating materials.

Minimum void height when fitting into ceiling space and minimum distance for light is 200mm.

CLEANING THE LIGHT UNIT:

Before cleaning isolate the unit from the mains supply.

Remove the internal grille by pulling down, wash in warm water.

The lamp body may be cleaned using a brush or damp cloth, before pushing the grille back onto the body.

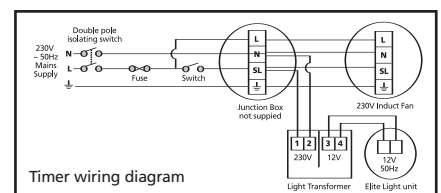
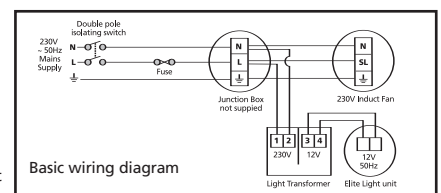
Wiring Instructions:

WARNING: Isolate electricity supply before starting work.

- The units must be wired and installed in accordance with IEE or local regulations by a qualified electrician. Fan must only be connected using flexible supply cord.
- The light unit is double insulated and does not require an earth connection.
- The units must be connected to a double pole isolating switch having contact separation of at least 3mm at each pole and fitted with a 3 amp fuse.
- The transformer must not be sited within reach of a person using a bath or shower nor within a shower cubicle/enclosure.
- The transformer is supplied with flying leads, the 12V leads should be connected directly to the lamp terminals within the lamp body, and the mains leads should be connected via a main voltage junction box or similar, supplied by others (see wiring diagrams).
- Connect only one light unit per transformer.

DO NOT OPERATE LIGHT WITHOUT FAN RUNNING.

Specification: Fan – 230V~50Hz. Ⓢ 23W IP44.
Light – 12V~50Hz. SELV 20W IP44.
Cable size: 1.00 mm² max. (flexible only).
Lamp: 12V dichroic lamp rated at 20W, 36° beam angle. MR16 GU5.3.



Lamp fitting and replacement

WARNING: Isolate electricity supply before starting work.

- Remove the internal grille by pulling down.
- Remove lamp lens (and old lamp if replacing) by pulling down.
- Fit lamp by pushing upwards into the lamp holder.
- Push up lamp lens and internal grille.

