





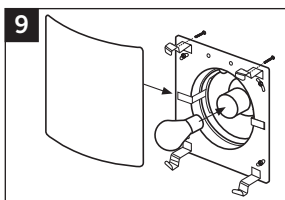
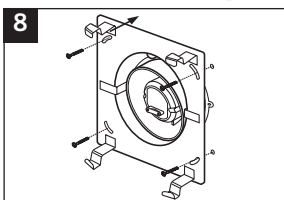
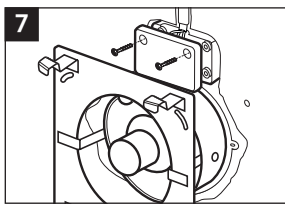
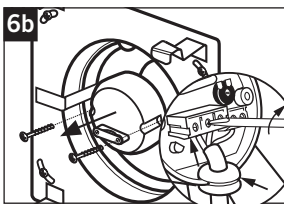
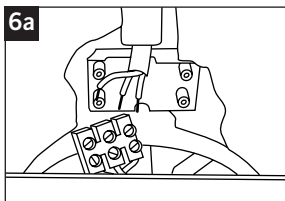
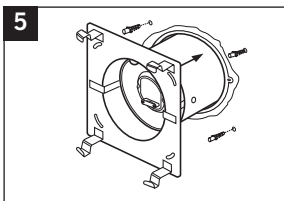
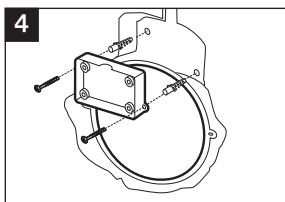
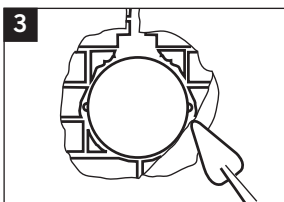
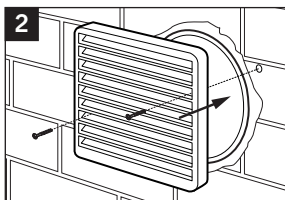
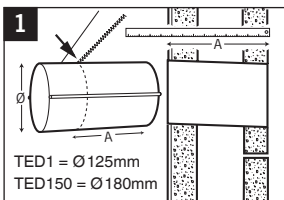
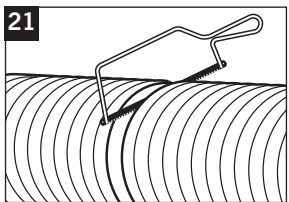
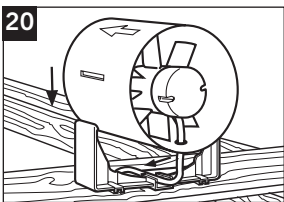
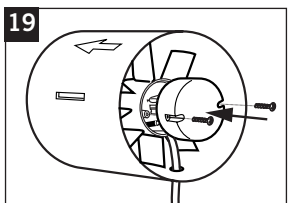
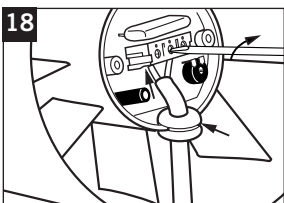
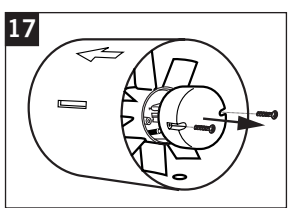
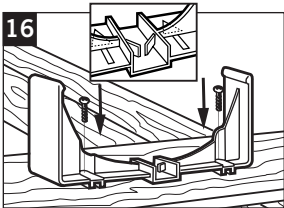
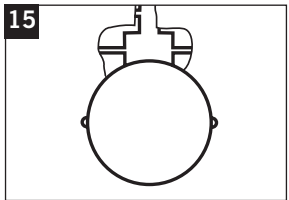
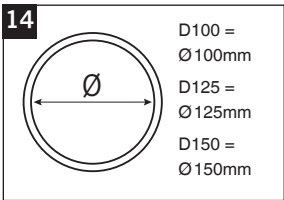
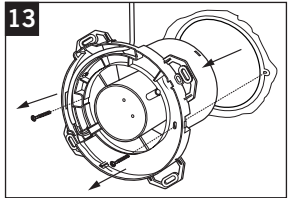
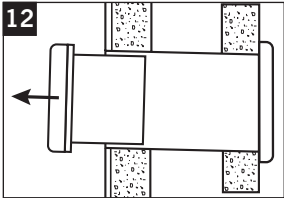
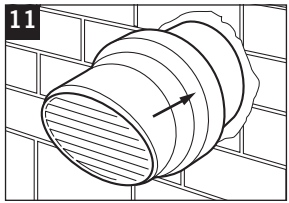
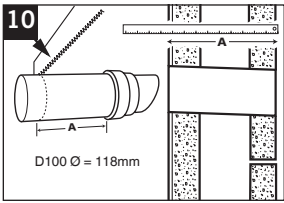


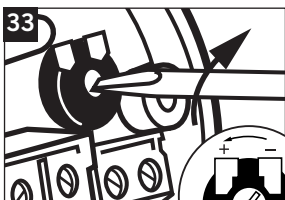
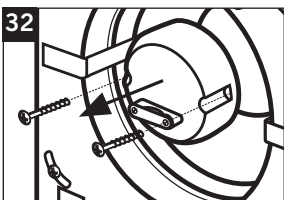
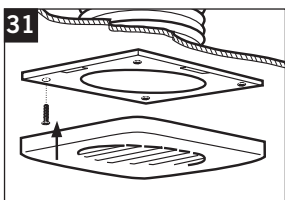
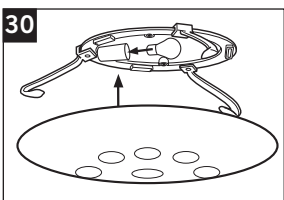
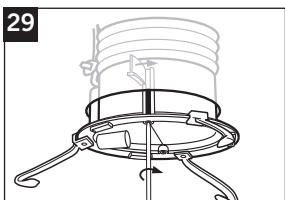
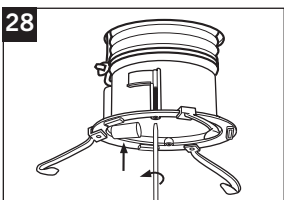
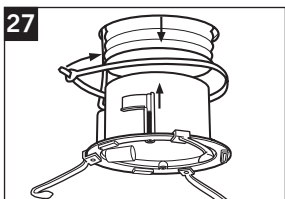
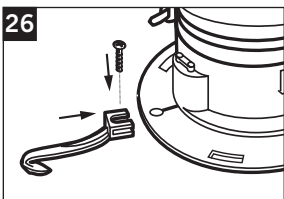
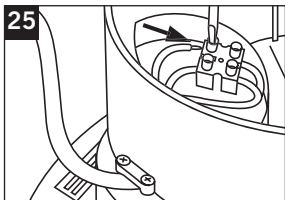
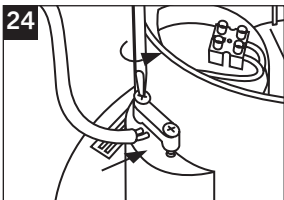
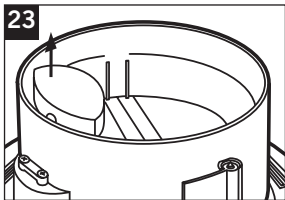
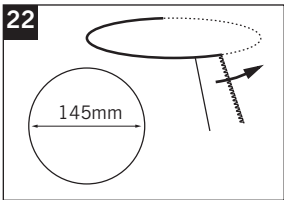
D100, D125 & D150

 Installation Instructions

	100mm	125mm	150mm
	34 l/s (124 m³/h)	50 l/s (180 m³/h)	61 l/s (277 m³/h)
	IP22/IP24	IP22	IP22
	40W	60W	-
	20W 230V~50 Hz Ⓢ	23W 230V~50 Hz Ⓢ	25W 230V~50 Hz Ⓢ
	40°C	40°C	40°C
	1.3 kg	1.4 kg	1.5 kg







Installation Instructions

Important Installation must be in accordance with these instructions. Read all instructions before commencing installations.

Fans supplied with luminaire fitting must be connected to the supply earth. Light fittings should be connected to a 6 amp fused circuit. The light fitting is suitable for indoor use only. All lights must be used in conjunction with a fan, they are not designed to be used without the fan.

The electrical connections must be carried out by a qualified electrician in accordance with local Building Regulations & Wiring Regulations.

- Observe appropriate safety precautions if working on steps or ladders. Wear eye protection when breaking out wall or window materials etc.
- Siting Notes: Where an open-flued oil or gas-fuelled appliance is installed in the kitchen, extract ventilation can cause the spillage of flue gases. Care must be taken to ensure ventilation is reduced appropriately, as set out in the Building Regulations. Kitchens with solid-fuel appliances should not have extract fans fitted.
- IP safety zones: D100TC – safety zone 2,
All others – safety zone 3.
- The fan should not be sited where it would be subject to a direct source of heat in excess of 40°C.
- When installing wall mounted fans, ensure that there are no buried cables or pipes in the way. It is recommended that this fan is mounted 2.3m above floor level.
- A clearance of 75mm to be allowed on at least one side of the fan for the removal of the front cover.

Wall installation D100, D125 & D150 Wall Fans

THROUGH WALL NEW INSTALLATION using TED1 or TED 150 ducting and DEG external grilles

- 1** Cut the duct to width of the plasterboard or tiled wall with slight fall to exterior. (Make provisions for cable). Make appropriate hole in wall for ducting.
- 2** Make good external wall with mortar or foam. Screw the protective wall grille (DEG1 for 100mm fans, DEG2 for 150mm fans) over the external duct opening.
- 3** Channel a hole for recessing terminal block (*D100LTC & D100LTG only*). Fill in any gaps with mortar or foam and make good around ducting. Make sure that ducting remains circular and screw holes are horizontal.
- 4** Drill holes for rawl plugs and screw terminal block into the hole cut for it. (*D100LTC & D100LTG only*)
- 5** Mark bracket screw holes, drill and plug with rawl plugs.
- 6a** Conduit wiring from mains and wire terminal block (See wiring details overleaf). Remove break out cable entry if required. *D100LTC & D100LTG only*.
Note – IPX approval is based on using H05RN-F cable incoming supply.
Electrician should ensure any other type of cable used is waterproof.
- 6b** Remove wiring cover. Wire fan according to wiring diagrams overleaf. Replace wiring cover. Ensure cable is secured using cable clamp provided. *All except D100LTC & D100LTG*.
- 7** Screw on terminal block cover and make good around it. *D100LTC & D100LTG only*.
- 8** Screw the bracket to the wall using No. 8 screws provided.
- 9** Fix bulb if required. Undo fixing screws, slide on front cover and secure front cover to bracket using screws provided.

WALL MOUNTED USING TED11 FAST FIX DUCTING (D100 RANGE ONLY)

- 10** Cut the duct to equal width of the finished wall thickness with slight fall to exterior. (Make provisions for cable). Make appropriate hole in wall for ducting.
- 11** Push the duct into hole from the exterior. The external grille will automatically provide a watertight seal. Fit the fan following steps 3–9 above.

THROUGH WALL REPLACEMENT INSTALLATION

- 12** Remove old fan.
- 13** Discard old fan.
- 14** Check ducting hole dimensions.
- 15** Channel a hole for recessing terminal block (*D100LTC or D100LTG*). Follow steps 3–9 above to complete installation.

Ceiling mounting D125LTG

- 16** Secure fan holder to a joist using two No. 6 screws.
- 17** To wire the induct fan, first remove the wiring cover.
- 18** Wire up the fan according to the diagrams below.
- 19** Secure the cover back onto the fan.
- 20** Clip fan into fan holder making sure it is secure.
- 21** Cut flexiduct to the lengths required.
- 22** Cut a hole in the ceiling of the room where the light unit is to be fitted and thread through the wiring for the light unit.
- 23** To wire the light unit, first remove the wiring cover.
- 24** Loosen the securing clamp on the side of the unit and thread the cable through the hole and re-secure.
- 25** Wire the unit according to diagram below, replace wiring cover and secure with screw provided.
- 26** Attach fixing clips using pins provided. Pins can be fitted above or below the fixing clip.
- 27** Push flexiduct through the ceiling and attached it to the light unit using one of the ties provided.
- 28** Use the clip fixing fingers on the unit. These are used by first slightly unscrewing the two long screws provided so that the clip fixing fingers are loose.
- 29** Twist the fixing fingers around so that they stick outwards. Then tighten them against the ceiling (do not overtighten).
- 30** Put in light bulb and clip front cover grille onto the fixing clips.
- 31** Prepare suitable hole through soffit or wall and fix external grille back plate using plugs and screws provided. Snap on external grille.

Wiring Diagrams

The electrical connections must be carried out by a qualified electrician in accordance with Part P of the Building Regulations & IEE Wiring Regulations

WARNING: Disconnect fan with double pole isolating switch before starting work.

The light fitting must be connected to the supply earth. Light fittings should be connected to a 6 amp fused circuit. The light fitting is suitable for indoor use only. All lights must be used in conjunction with a fan, they are not designed to be used without the fan.

Adjusting the Timer

- 32** First remove the wiring cover on the induct fan.
- 33** Adjust timer. The timer is adjustable between 1 & 30 minutes. It is factory set at midpoint.

Replace the induct fan's wiring cover.

Cleaning

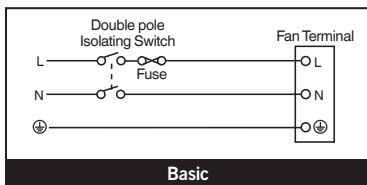
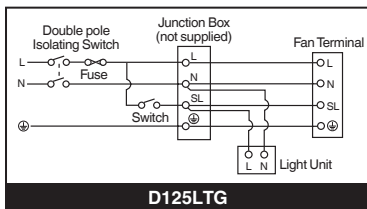
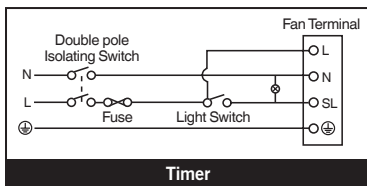
Always isolate fan before cleaning.

Chrome Front Cover

Clean cover with a soft dry cloth. Do not use abrasive materials.

Glass Front Cover

Remove and wash in warm water or use a damp cloth. Do not use abrasive materials.



Greenwood Air Management Ltd.,
Greenwood House, Brookside Avenue,
Rustington, W. Sussex BN16 3LF
United Kingdom

Tel: +44 (0)1903 771021. Fax: +44 (0)1903 782398

Email: info@greenwood.co.uk

Web: www.greenwood.co.uk

